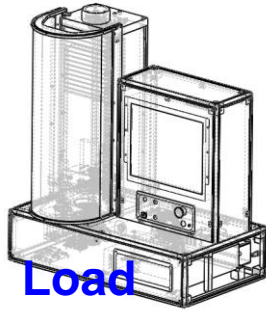
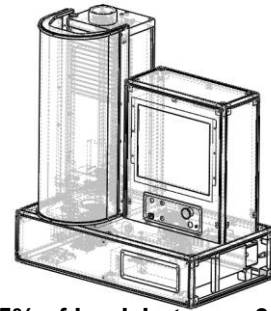


CT-2000PC





Specifications



Load

- ☐ Load Capacity 2500N (560.0lbf)
- ☐ Load Resolution 0.05N (0.0110lbf)
- ☐ Load Accuracy per ISO 7500 /1 Class 0.5 (0.5% of load, between 0.5% capacity up to full capacity)
- ☐ Continuous digital display or Force/Load height graphical analysis tools and display
- ☐ Safe overload to 150% of FS (compression and tension overload protection at 100% of FS load)

Stroke

- ☐ Stroke.500mm (16") HR Model characteristics
- ☐ Resolution: 0.00025mm (0.0000098")
- ☐ Accuracy: ± 0.01 mm (± 0.00039 ")
- ☐ Accuracy: better than 0.005mm– Available with independent Calibration
- ☐ 80mm (3.15")

Platten Diameter

- ☐ Automatically determined
- ☐ Automatic or manual determination of spring rate (linear analysis), option for characterization of non-linear rates (e.g. conical springs)

Free Length Spring rate

- ☐ Automatic detection of tension spring initial tension.

Initial tension Computer

- ☐ Intel dual Core (minimum) processor
- ☐ Built-In PC.
- ☐ Fully Microsoft Win7 and Win10 compatible

Display 19"
Touch Screen
Built – In
Monitor.

Languages

- ☐ English, German, French and Spanish

Software Features

- ☐ Programmable for automated testing, Includes frelength, initial tension and spring rate results. Solid Height detection included.
- ☐ Full reporting and printing capability available.
- ☐ On-Line and off-line SPC control charts and Cpk capability testing available.
- ☐ Design and reverse engineering algorithms
- ☐ Smart self calibration routines
- ☐ Fatigue (Life/Cycle) Testing algorithms available

Units

- ☐ N, kgf, gf, ozf, lbf – mm, inches

Test speeds

- ☐ 0.1mm/s – 125mm/s (0.236"/min-295.3"/min)
- ☐ 12 distinct speed settings available

Power

- ☐ 110V~220V AC 4.5A (Maximum)



WWW.SASTESTERS.COM

Ph: +972-9-7603895

Fax: +972-9-7604849

E-Mail: Info@SASTESTERS.COM