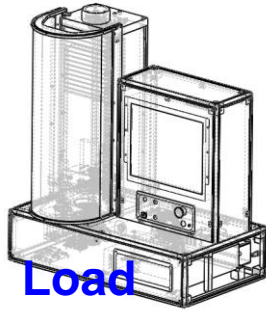


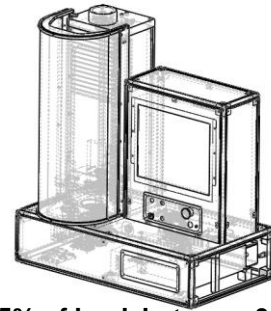
# CT-10PC





**Load**

## Specifications



- ☐ Load Capacity 10N (2.25lbf)
- ☐ Load Resolution 0.0002N (0.00045lbf)
- ☐ Load Accuracy per ISO 7500 /1 Class 0.5 (0.5% of load, between 0.5% capacity up to full capacity)
- ☐ Continuous digital display or Force/Load height graphical analysis tools and display
- ☐ Safe overload to 150% of FS (compression and tension overload protection at 100% of FS load)
- ☐ Stroke.500mm (16") HR Model characteristics
- ☐ Resolution: 0.00025mm (0.000098")
- ☐ Accuracy:  $\pm 0.01\text{mm}$  ( $\pm 0.00039"$ )
- ☐ Accuracy: better than 0.005mm– Available with independent Calibration
- ☐ 80mm (3.15")
- ☐ Automatically determined
- ☐ Automatic or manual determination of spring rate (linear analysis), option for characterization of non-linear rates (e.g. conical springs)
- ☐ Automatic detection of tension spring initial tension.
- ☐ Intel dual Core (minimum) processor
- ☐ Built-In PC.
- ☐ Fully Microsoft Win7 and Win10 compatible
- ☐ English, German, French and Spanish
- ☐ Programmable for automated testing, Includes frelength, initial tension and spring rate results. Solid Height detection included.
- ☐ Full reporting and printing capability available.
- ☐ On-Line and off-line SPC control charts and Cpk capability testing available.
- ☐ Design and reverse engineering algorithms
- ☐ Smart self calibration routines
- ☐ Fatigue (Life/Cycle) Testing algorithms available
- ☐ N, kgf, gf, ozf, lbf – mm, inches
- ☐ 0.1mm/s – 125mm/s (0.236"/min-295.3"/min)
- ☐ 12 distinct speed settings available HR Model
- ☐ 110V~220V AC 4.5A (Maximum)

**Stroke**

**Platten  
Diameter**

**Free Length  
Spring rate**

**Initial tension  
Computer**

**Languages**

**Software  
Features**

**Units  
Test speeds**

**Power**

**Display 19"  
Touch Screen  
Built – In  
Monitor.**



[WWW.SASTESTERS.COM](http://WWW.SASTESTERS.COM)

Ph: +972-9-7603895

Fax: +972-9-7604849

E-Mail: Info@SASTESTERS.COM